



23

Worcester Road, Evesham, WR11 4JU

**SHELDON
BOSLEY
KNIGHT**

LAND AND
PROPERTY
PROFESSIONALS

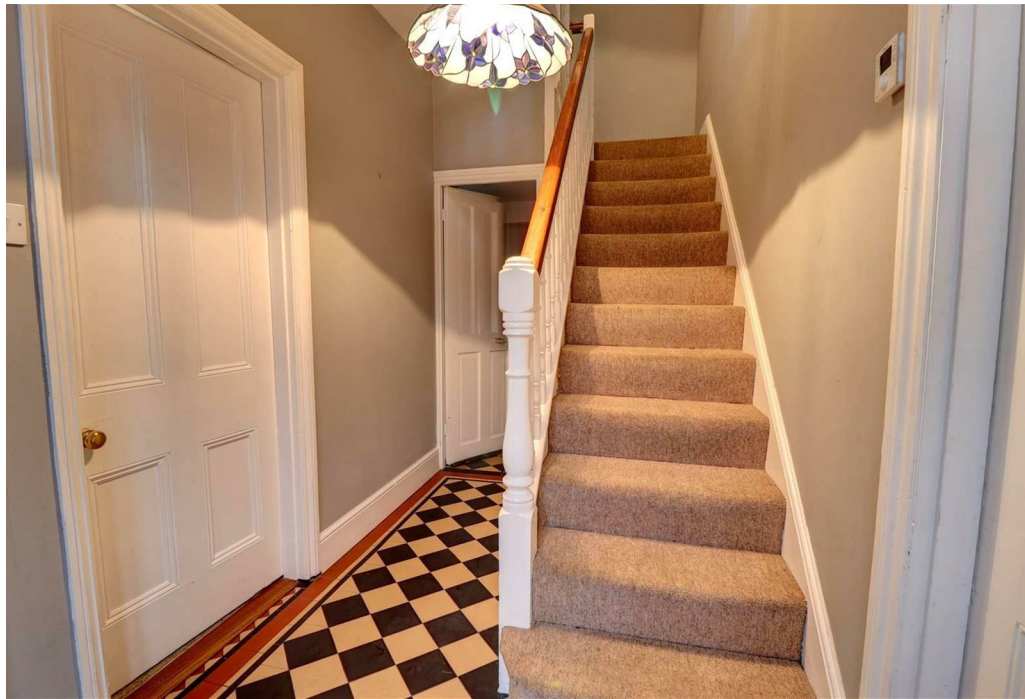
Property Description

*** AVAILABLE NOVEMBER *** This three Bedroom end of terrace Victorian house is situated close to the town of Evesham, within a short walking distance of the train station and shops. The property briefly comprises, hall, living room with feature cast iron fireplace, dining room with fireplace, breakfast kitchen with a range of fitted units, AGA, utility room with plumbing for washing machine, cloakroom. Stairs elevating to first floor with 2 double and 1 single bedrooms, bathroom with full suite including over bath shower. Rear garden, on road parking (permits available from Wychavon District Council). This property is offered mostly unfurnished. Council Tax Band B. Energy Rating E. Initial 12 Month Tenancy.

VIEWINGS FULLY BOOKED

We are sorry but we are fully booked for viewings for this property.

If you would like to view similar properties
please contact one of our local offices.





Key Features

- AVAILABLE NOVEMBER
- Evesham
- 3 Bedrooms
- End Of Terrace House
- Unfurnished
- Rear Garden
- On Road Parking
- Council Tax Band B
- Energy Rating E
- Initial 12 Month Tenancy

£900 PCM